

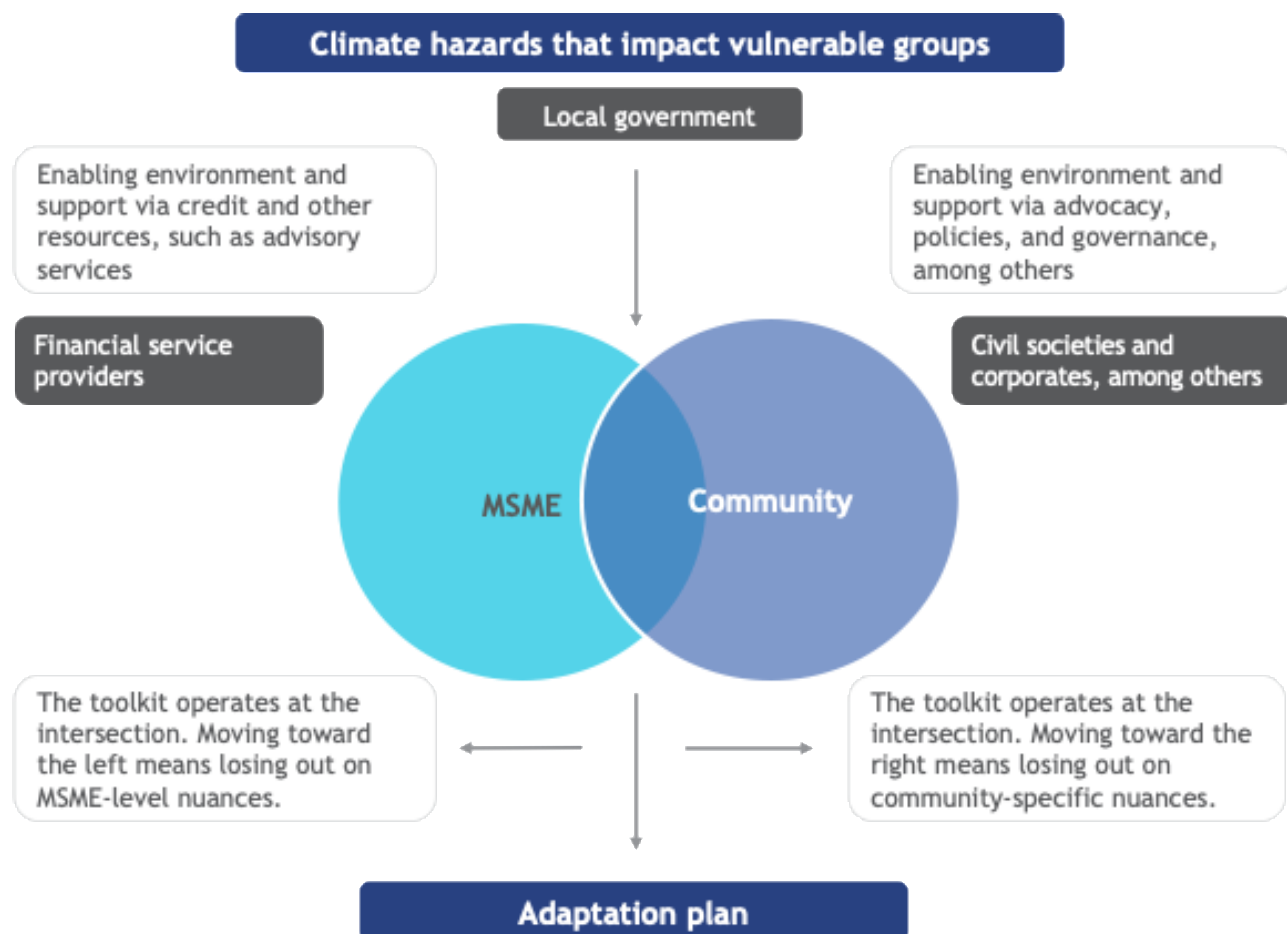
Summary of the Toolkit on Locally-led Adaptation for Communities

April 2025



Overview

MSC (MicroSave Consulting's) approach to locally-led adaptation (LLA) is grounded in the belief that climate resilience must be built by recognizing the hyperlocal contexts and priorities of different local actors. MSC envisions that LLA will operate at the intersection of communities and MSMEs, two of society's most vulnerable groups.



The toolkit on locally-led adaptation for communities provides a structured, participatory, and field-tested process to help communities assess climate risks and cocreate actionable adaptation plans. We have implemented the toolkit in diverse regions of India. It ensures active participation from women, indigenous groups, and economically marginalized populations.

Designed to be globally relevant, the toolkit helps communities combine local knowledge with scientific climate data, identify priority risks, and develop costed, time-bound adaptation strategies. It strengthens local institutions through practical insights and promotes ownership of climate action at the grassroots level.

Toolkit components and key insights

Tool	Key insight
Tool 1: Mapping of climate hazards and exposure	It maps key facilities and visualizes hazard-prone areas through hazard perception mapping to assess trends and impacts on livelihood assets over time.
Tool 2: Assessment of social vulnerability	It assesses community vulnerability through the Sustainable Livelihoods Framework, with a focus on five capitals—human, social, natural, physical, and financial.
Tool 3: Identification of climate-related risks	It combines hazard and vulnerability assessments to identify key climate risks in the area and outline their direct and indirect impacts.
Tool 4: Identification of risk mitigation and adaptation options	This tool uses a gamified approach to explain risk mitigation and adaptation. In it, snakes symbolize risks, and ladders represent mitigation options.
Tool 5: Prioritization of long-term adaptation options	It ranks adaptation options based on accessibility, affordability, and availability.
Tool 6: Development of a Community Adaptation Plan	It creates a detailed plan for stakeholders to implement prioritized adaptation options and outlines costs, timelines, and responsible actors for each option.
Tool 1: Mapping of climate hazards and exposure	It maps key facilities and visualizes hazard-prone areas through hazard perception mapping to assess trends and impacts on livelihood assets over time.

Benefits:

The toolkit can be applied globally. This toolkit is particularly effective where climate change's direct and indirect effects are evident.

- It uses participatory rural appraisal to ensure local involvement, context-specific solutions, and community ownership.
- It promotes inclusive planning through gender-disaggregated analysis and engagement with diverse groups.
- It combines climate data with local knowledge to codevelop relevant adaptation solutions.
- It guides communities as they identify and prioritize climate risks for informed decision-making.
- It builds adaptive capacity of local institutions through the involvement of key stakeholders, such as governments and civil society.

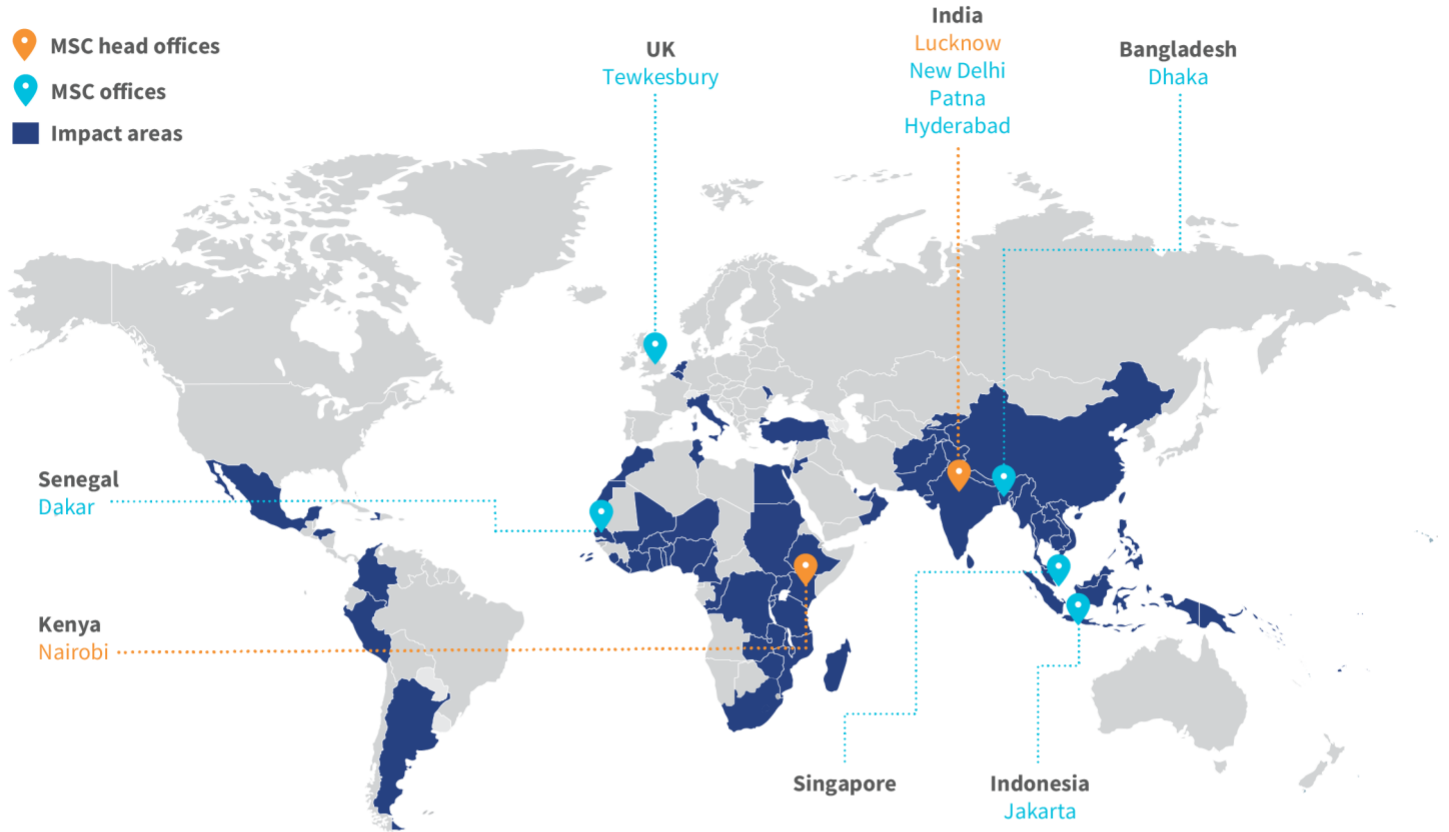
Additionally, the toolkit enhances the decision-making capacity of local institutions through structured, participatory insights into climate vulnerabilities and adaptation priorities.

Who should use this?

The community LLA toolkit is designed for use by a diverse set of local stakeholders engaged in climate adaptation:

- **Local governments** can integrate insights from Community Adaptation Plans (CAPs) into governance and public investment priorities.
- **Civil society organizations (CSOs)** can align development programs in health, livelihoods, WASH, and education with community-identified adaptation needs.
- **Financial service providers (FSPs)** can design climate-responsive financial products based on CAP insights, such as weather-indexed insurance.
- **Businesses and corporations** can use CAP data to strengthen ESG strategies, support local resilience, and safeguard supply chains in vulnerable regions.

- MSC head offices
- MSC offices
- Impact areas



Asia head office

28/35, Ground Floor, Princeton Business Park, 16 Ashok Marg,
Lucknow, Uttar Pradesh, India 226001
Tel : +91-522-228-8783 | Fax : +91-522-406-3773

Africa head office

Landmark Plaza, 5th Floor, Argwings Kodhek Road
P.O. Box 76436, Yaya 00508, Nairobi, Kenya
Tel: +254-20-272-4801/272-4806

Email: info@microsave.net | Website: www.microsave.net